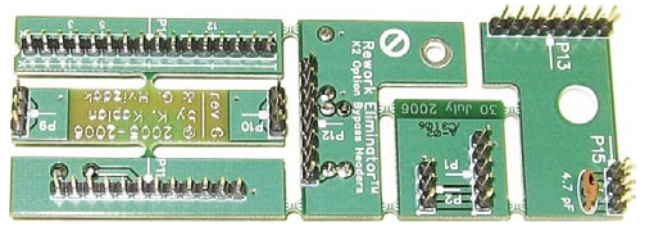


New Products

OPTION BYPASS HEADER ACCESSORY FOR ELECRAFT K2

◇Rework Eliminator option bypass headers from KI4GGX and WB2ART allow the Elecraft K2 to operate if an installed option (such as the noise blanker or SSB adapter) is removed. They also make it possible to build a new K2 that is ready for easy installation of options in the future. Normally some PC board rework is necessary to add options to the K2 after it is built. If the Rework Eliminator “un-modules” are installed when the K2 is built, any K2 options can be installed without major disassembly of the K2 enclosure or additional soldering on the K2’s three main PC boards. The Rework Eliminator is supplied as a single 1.3 × 3.825 inch PC board that snaps apart forming six postage-stamp-size headers. Prices range from \$5.95 for the bare board to \$16.95 for a complete kit of parts with printed manual. For details see www.unpcbs.com.



Courtesy November 2006 QST